

# Experience University Research At UCI



**UCI**



**#1**

**Best University  
Under 50 Years Old**  
*Times Higher Education*

**#9**

**Public University**  
*US News & World Report*

**#50**

**Best University  
in the World**  
*Shanghai Jiao Tong  
University*

**#1**

**“Cool School”  
for Sustainability**  
*Sierra Magazine*  
2 consecutive years

# Key Facts

UCI

**31,551**

Total students  
Fall 2015

**3**

Nobel-Prize winning  
faculty

**92**

Undergraduate  
majors

**>100**

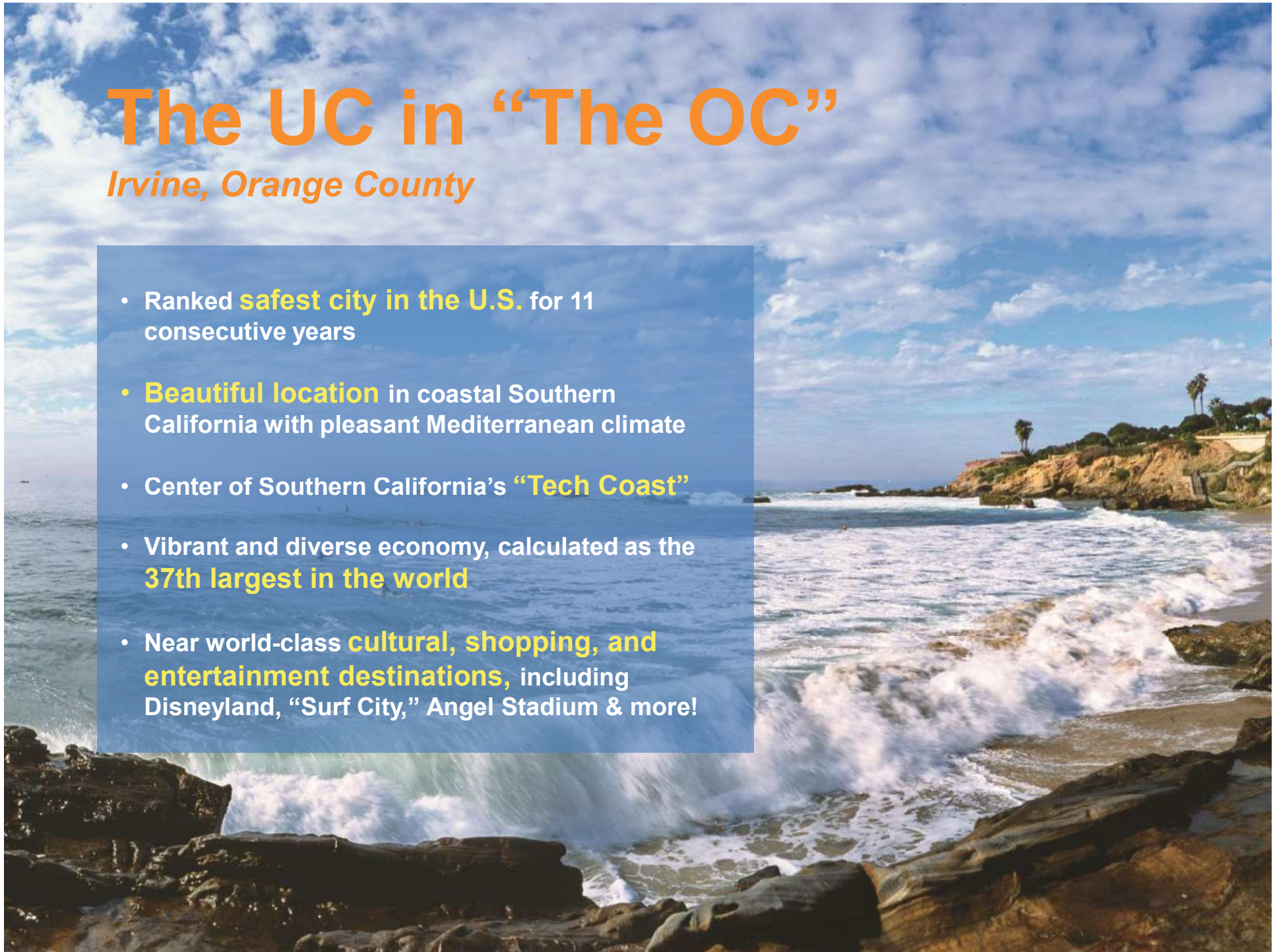
Inventions  
generated each  
year

**102,000** applications were received for **6,000** spots in Fall 2017, making UCI *the fastest-growing* and one of the *most competitive UC campuses*.

# The UC in “The OC”

*Irvine, Orange County*

- Ranked **safest city in the U.S.** for 11 consecutive years
- **Beautiful location** in coastal Southern California with pleasant Mediterranean climate
- Center of Southern California’s **“Tech Coast”**
- Vibrant and diverse economy, calculated as the **37th largest in the world**
- Near world-class **cultural, shopping, and entertainment destinations**, including Disneyland, “Surf City,” Angel Stadium & more!

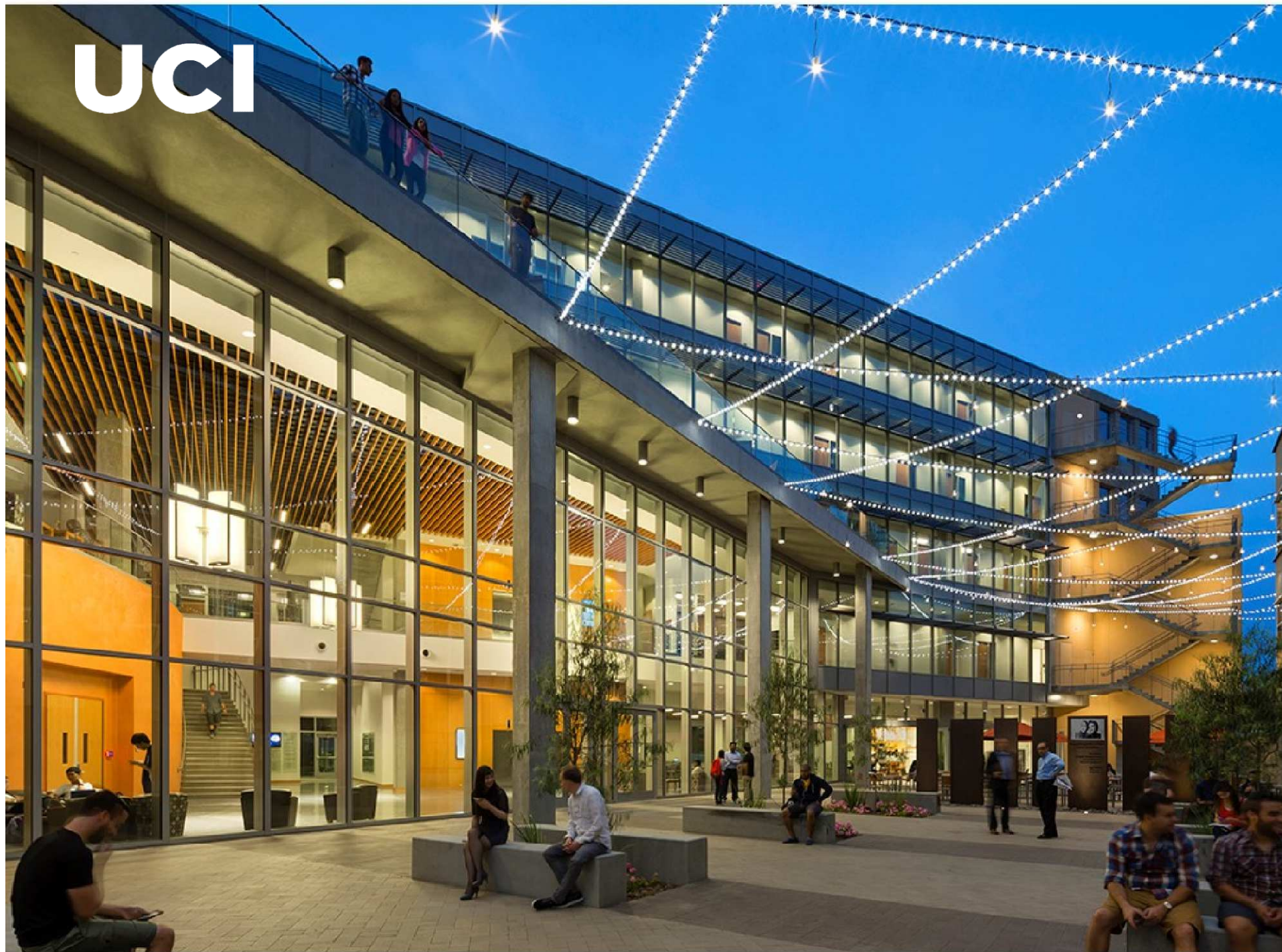


UCI



© 2011 F&A Home

UCI



UCI

CONTEMPORARY ARTS CENTER



- **Experience University Research (EUR)** is a three-week academic **RESEARCH** program offered by various Facilities at University of California, Irvine, for students from cooperating universities.
- EUR students can take classes in **Engineering, Biology, Social Ecology, Math, Computer Science, Law and Business**, all taught by UC Irvine faculty and field experts.
  - Some classes may not be available both sections
- EUR students will also learn about American university **RESEARCH** practices, culture and admissions and improve academic study skills as they complete university-level assignments.



## **EUR PROGRAM BENEFITS**

- **Gain** an international academic and **RESEARCH** experience
- **Study** at a TOP 10<sup>th</sup> public U.S. university
- **Meet** students from other universities and American students through socio-cultural activities
- **Learn** about the U.S. culture and society

## EUR COURSE PACKAGES

- There are four courses in each package
- Each week is about 24 hours of class time
- Classes are interactive and often include group work and discussions
- Evaluation may include assignments, group projects, papers, exams, and participation marks
- **Courses do not receive UCI credit but credit is suggested to be granted by the student's home university (at its discretion)**

## Some Faculties Profiles

### **John M. Whiteley**

Professor of Social Ecology  
Ed.D. Harvard University

**Specializations:**

moral development, late adolescence to early adult development, social ecology of peace

### **John Stupar**

Lecturer, Director of the Ethics Institute

**Specializations:**

Schmid College of Science and Technology; Mathematics and Computer Science

### **SHIN LIN**

Professor, Developmental & Cell Biology, Biomedical Engineering, Professor of Physiology and Biophysics, School of Medicine

**Specializations:**

Complementary and alternative medicine

## EUR PROGRAM FEE







The package fee per student is \$5,500 USD for the program and it includes:

- Four courses
- Course materials
- Health insurance
- Group airport transfers
- Shared accommodation **July 08<sup>th</sup>-28<sup>th</sup>, August 05<sup>th</sup>-25<sup>th</sup>, 2018**
- Orientation and farewell events
- Socio-cultural activities (optional trips may require an additional fee)

## Daily Schedule

<b>9:00am-10:20am</b>	<b>Academic Presentation Skills</b>
<b>10:30am-11:50am</b>	<b>Research Methodology</b>
<b>12:00pm-1:00pm</b>	<b>Lunch</b>
<b>1:00pm-4:00pm</b>	<b>University Elective/ Conversation Partners</b>

## Sample Calendar

SUNDAY	MONDAY	TUESDAY	WEDNESDAY	THURSDAY	FRIDAY	SATURDAY
July 8  <b>ARRIVAL AT LAX</b>  <b>Homestay Orientation</b>	9 <b>WELCOME TO UCI!</b> Program Orientation 9:00am – 12:00pm  <b>Welcome Lunch &amp; Campus Tour</b> 12:00pm – 2:00pm  <b>PRESENTATION</b> Graduate School Admissions 2:00pm – 3:00pm	10 <b>Academic Presentation Skills</b> 9:00am – 10:20am <b>Research Methodology</b> 10:30am – 11:50am  <b>Intro to Environmental Analysis &amp; Design</b> 1:00pm – 4:00pm	11 <b>Academic Presentation Skills</b> 9:00am – 10:20am <b>Research Methodology</b> 10:30am – 11:50am  <b>Conversation Partner Meeting</b> 1:00pm – 4:00pm	12 <b>Academic Presentation Skills</b> 9:00am – 10:20am <b>Research Methodology</b> 10:30am – 11:50am  <b>Intro to Environmental Analysis &amp; Design</b> 1:00pm – 4:00pm	13 <b>Academic Presentation Skills</b> 9:00am – 10:20am <b>Research Methodology</b> 10:30am – 11:50am  <b>Conversation Partner Meeting</b> 1:00pm – 4:00pm	14 <b>SAMPLE ACTIVITY</b>    <b>Disneyland or California Adventure</b> 9:00am – 12:00am
15 <b>SAMPLE ACTIVITY</b>    <b>L.A. Tour</b> 9:00am – 9:00pm	16 <b>Academic Presentation Skills</b> 9:00am – 10:20am <b>Research Methodology</b> 10:30am – 11:50am  <b>PRESENTATION</b> American Culture 2:00pm – 3:00pm	17 <b>Academic Presentation Skills</b> 9:00am – 10:20am <b>Research Methodology</b> 10:30am – 11:50am  <b>Intro to Environmental Analysis &amp; Design</b> 1:00pm – 4:00pm	18 <b>Academic Presentation Skills</b> 9:00am – 10:20am <b>Research Methodology</b> 10:30am – 11:50am  <b>Conversation Partner Meeting</b> 1:00pm – 4:00pm	19 <b>Academic Presentation Skills</b> 9:00am – 10:20am <b>Research Methodology</b> 10:30am – 11:50am  <b>Intro to Environmental Analysis &amp; Design</b> 1:00pm – 4:00pm	20 <b>Academic Presentation Skills</b> 9:00am – 10:20am <b>Research Methodology</b> 10:30am – 11:50am  <b>Conversation Partner Meeting</b> 1:00pm – 4:00pm	21 <b>SAMPLE ACTIVITY</b>    <b>Universal Studios</b> 9:00am – 10:00pm
22 <b>SAMPLE ACTIVITY</b>    <b>Outlet Shopping</b> 10:00am – 5:00pm	23 <b>Academic Presentation Skills</b> 9:00am – 10:20am <b>Research Methodology</b> 10:30am – 11:50am  <b>Academic Advising</b> 2:00pm – 4:00pm	24 <b>Academic Presentation Skills</b> 9:00am – 10:20am <b>Research Methodology</b> 10:30am – 11:50am  <b>Intro to Environmental Analysis &amp; Design</b> 1:00pm – 4:00pm	25 <b>Academic Presentation Skills</b> 9:00am – 10:20am <b>Research Methodology</b> 10:30am – 11:50am  <b>Conversation Partner Meeting</b> 1:00pm – 4:00pm	26 <b>Academic Presentation Skills</b> 9:00am – 10:20am <b>Research Methodology</b> 10:30am – 11:50am  <b>Intro to Environmental Analysis &amp; Design</b> 1:00pm – 4:00pm	27 <b>Academic Presentation Skills</b> 9:00am – 10:20am <b>Research Methodology</b> 10:30am – 11:50am  <b>Graduation Luncheon</b> 1:00pm – 3:00pm  	28  <b>Housing Check-Out</b>  <b>DEPART FOR LAX</b>  



- Group style housing/co-ed building/  
same-gender bedroom
- Fully-furnished with an equipped  
kitchen
- Basketball and volleyball courts  
available
- Wireless internet and local phone in  
bedroom and cable TV/DVD in common  
room
- Approximately 10-15 minute walk to  
classrooms from most locations

# UCI

## Campus Dormitory





## YOUR EUR CONTACTS

Inquiries from Asia:

**Ming CAI**

International Marketing Coordinator

Tel: (778) 863-9613

Email: [ming.cai@unx.uci.edu](mailto:ming.cai@unx.uci.edu)

WeChat: 247895687

For all other inquiries:

**Karl Kottman**

Manager, Custom Designed Programs

UCI Division of Continuing Education

+1-949-824-9061 (Voice)

+1-949-824-8065 (Fax)

**See you in California!**

